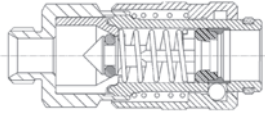


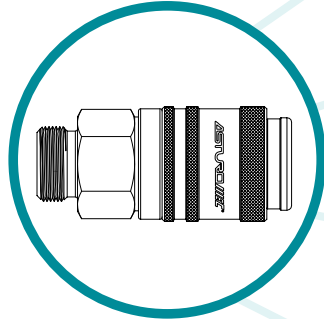
# COUPLINGS and PLUGS

**X300 U**



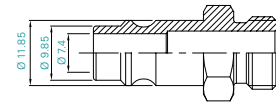
**X300 U**  
universal automatic coupling

Body: nickel-plated brass/aluminium  
Tip: PA66 loaded glass with aluminium ring  
Air valve: brass  
Lock: 6-ball steel  
Gaskets: NBR

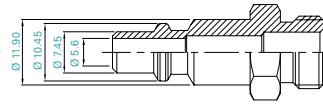


COMPATIBLE PLUGS

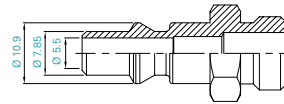
STANDARD



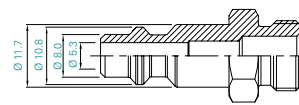
**D**



**I**

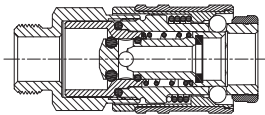


**S**



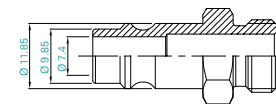
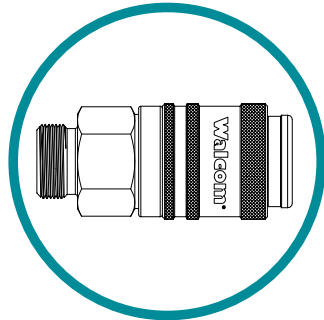
**USA**

**X300**



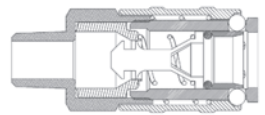
**X300**  
automatic coupling

Body: nickel-plated brass/anodised aluminium  
Tip: PA66 loaded glass with aluminium ring  
Air valve: brass  
Lock: 6-ball steel  
Gaskets: NBR



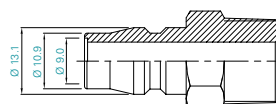
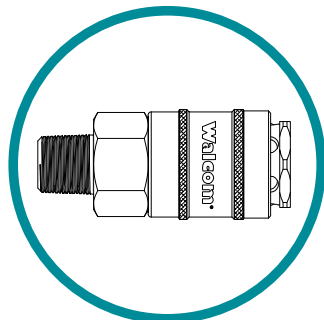
**D**

**X400 AUT**



**X400**  
semi-automatic coupling

Body: nickel-plated brass/tempered and chrome-plated steel  
Tip: nickel-plated brass  
Air valve: tropicalized steel  
Lock: 4-ball steel  
Gaskets: NBR



**Jp**

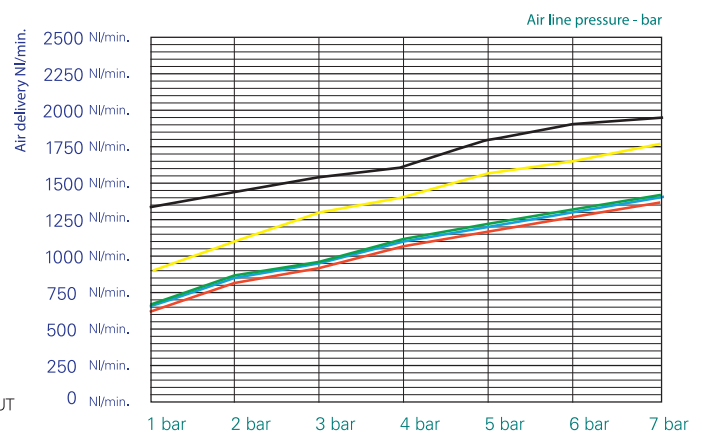
**TECHNICAL SPECIFICATIONS:**

Professional coupling and plugs and high air flow fittings for bodywork use.  
Japanese (diam. 9.2 mm) and German (diam. 7.4 mm) standards guarantee constant air flow between hose and spray gun, without choking, and air flow over 1.500 l/min at 6 bar.

Operating air pressure: 0 - 16 bar  
Working temperature: -40°C + 80°C

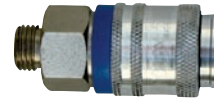
- Standard D
- Standard I
- Standard S
- Standard USA
- Standard X400 AUT

**QUICK COUPLING FLOW DIAGRAM WITH 1 bar**



### X300 U - Male

Thread 1/4"	Ref. 10201U
Thread 3/8"	Ref. 10202U
Thread 1/2"	Ref. 10203U
Package: 25 pcs	



### X300 U - Female

Thread 1/4"	Ref. 10211U
Thread 3/8"	Ref. 10212U
Thread 1/2"	Ref. 10213U
Package: 25 pcs	



### X300 U - With rest

Internal diameter 6 mm	Ref. 10221U
Internal diameter 8 mm	Ref. 10222U
Internal diameter 10 mm	Ref. 10223U
Package: 25 pcs	



### X300 U - For rubber hose

Internal diameter 6 mm - External diameter 14 mm	Ref. 10231U
Internal diameter 8 mm - External diameter 17 mm	Ref. 10232U
Internal diameter 10 mm - External diameter 19 mm	Ref. 10233U
Internal diameter 8 mm - External diameter 14 mm	Ref. 10234U
Package: 25 pcs	



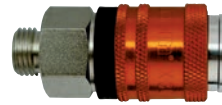
### X300 U - For nylon hose with spring

Thread 6x8	Ref. 10241U
Thread 8x10	Ref. 10242U
Thread 6x10	Ref. 10243U
Thread 8x12	Ref. 10244U
Thread 10x12	Ref. 10246U
Package: 25 pcs	



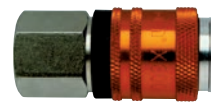
### X300 - Male

Thread 1/4"	Ref. 10251
Thread 3/8"	Ref. 10252
Thread 1/2"	Ref. 10253
Package: 10 pcs	



### X300 - Female

Thread 1/4"	Ref. 10261
Thread 3/8"	Ref. 10262
Thread 1/2"	Ref. 10263
Package: 10 pcs	



### X300 - With rest

Internal diameter 6 mm	Ref. 10271
Internal diameter 8 mm	Ref. 10272
Internal diameter 10 mm	Ref. 10273
Package: 10 pcs	



### X300 - For rubber hose

Internal diameter 6 mm - External diameter 14 mm	Ref. 10281
Internal diameter 8 mm - External diameter 14 mm	Ref. 10282
Internal diameter 8 mm - External diameter 17 mm	Ref. 10283
Internal diameter 10 mm - External diameter 19 mm	Ref. 10284
Package: 10 pcs	



### X300 - For nylon hose with spring

Thread 6x8	Ref. 10291
Thread 8x10	Ref. 10292
Thread 6x10	Ref. 10293
Thread 8x12	Ref. 10294
Thread 10x12	Ref. 10295
Package: 10 pcs	



### X400 - Male

Thread 1/4"U	Ref. 10551
--------------	------------

Thread 3/8"U	Ref. 10552
--------------	------------

Package: 10 pcs



### X400 - Female

Thread 1/4"U	Ref. 10651
--------------	------------

Thread 3/8"U	Ref. 10652
--------------	------------

Package: 10 pcs



### X400 - With rest

Internal diameter 8 mm	Ref. 10555
------------------------	------------

Internal diameter 10 mm	Ref. 10556
-------------------------	------------

Package: 10 pcs



### X400 - Jp male plug

Thread 1/4"U	Ref. 11470
--------------	------------

Thread 3/8"U	Ref. 11471
--------------	------------

Package: 10 pcs



### X400 - Jp female plug

Thread 1/4"U	Ref. 11480
--------------	------------

Thread 3/8"U	Ref. 11481
--------------	------------

Package: 10 pcs



# X100 S

## Male

Ref. I	Thread	Ref. S	Thread	Ref. USA	Thread	Ref. GB	Thread
10501/S	1/4"	10511/S	1/4"	10521/S	1/4"	10531/S	1/4"
10502/S	3/8"	10512/S	3/8"	10522/S	3/8"	10532/S	3/8"
10503/S	1/2"	10513/S	1/2"	10523/S	1/2"	/	/



Package: 25 pcs

## Female

Ref. I	Thread	Ref. S	Thread	Ref. USA	Thread	Ref. GB	Thread
10601/S	1/4"	10611/S	1/4"	10621/S	1/4"	10631/S	1/4"
10602/S	3/8"	10612/S	3/8"	10622/S	3/8"	10632/S	3/8"



Package: 25 pcs

## For rubber hose

Ref. I	Øint.-Øext.	Ref. S	Øint.-Øext.	Ref. USA	Øint.-Øext.	Ref. GB	Øint.-Øext.
10703/S	6x14	/	/	/	/	/	/
10710/S	8x14	/	/	/	/	/	/
10707/S	8x17	/	/	/	/	/	/
10709/S	10x19	/	/	/	/	/	/



Package: 25 pcs

## For nylon hose with spring

Ref. I	Øint.-Øext.	Ref. S	Øint.-Øext.	Ref. USA	Øint.-Øext.	Ref. GB	Øint.-Øext.
10801/S	6x8	10811/S	6x8	/	/	/	/
10802/S	8x10	10812/S	8x10	10822/S	8x10	/	/
10803/S	8x12	/	/	/	/	/	/



Package: 25 pcs

## With rest


Ref. I	Øint.	Ref. S	Øint.-Øext.	Ref. USA	Øint.-Øext.	Ref. GB	Øint.-Øext.
/	/	10731/S	6	10741/S	6	10750/S	6
/	/	10733/S	8	10743/S	8	10751/S	8
/	/	/	/	10744/S	9	10752/S	9
/	/	10735/S	10	10745/S	10	/	/
/	/	/	/	10748/S	13	/	/




Package: 25 pcs

# X90


## Couplings

Ref.	Thread	<b>MALE</b> 
10400	1/8"	
10401	1/4"	

Package: 25 pcs


Ref.	Thread	<b>FEMALE</b> 
10410	1/8"	
10411	1/4"	

Package: 25 pcs


Ref.	Ø int.	<b>WITH REST</b> 
10420	6	
10421	8	

Package: 25 pcs


## Plugs

Ref.	Thread	<b>MALE</b> 
11400	1/8"	
11401	1/4"	

Package: 25 pcs

Ref.	Thread	<b>FEMALE</b> 
11410	1/8"	
11411	1/4"	

Package: 25 pcs

Ref.	Ø int.	<b>WITH REST</b> 
11420	6	

Package: 25 pcs

# STEEL PLUGS FOR X100 S and X300 U

## Male

Ref. I	Thread	Ref. S	Thread	Ref. USA	Thread	Ref. GB	Thread
11001	1/4"	11011	1/4"	11021	1/4"	11031	1/4"
11002	3/8"	11012	3/8"	11022	3/8"	/	/
11003	1/2"	11013	1/2"	11023	1/2"	/	/



Package: 25 pcs

## Female

Ref. I	Thread	Ref. S	Thread	Ref. USA	Thread	Ref. GB	Thread
11101	1/4"	11111	1/4"	11121	1/4"	11131	1/4"
11102	3/8"	11112	3/8"	11122	3/8"	11132	3/8"



Package: 25 pcs

## For rubber hose

Ref. I	Ø int.-Ø ext.	Ref. S	Ø int.-Ø ext.	Ref. USA	Ø int.-Ø ext.	Ref. GB	Ø int.-Ø ext.
11170	6x10	/	/	/	/	/	/
11183	6x14	/	/	/	/	/	/
11171	8x12	/	/	/	/	/	/
11190	8x14	/	/	/	/	/	/
11187	8x17	/	/	/	/	/	/
11172	10x15	/	/	/	/	/	/
11188	10x17	/	/	/	/	/	/
11189	10x19	/	/	/	/	/	/



Package: 25 pcs

## Bayonet

Ref. I	/	Ref. S	/	Ref. USA	/	Ref. GB	/
11260	/	/	/	11262	/	/	/



Package: 25 pcs

## For rubber hose with spring

Ref. I	Ø int.-Ø ext.	Ref. S	Ø int.-Ø ext.	Ref. USA	Ø int.-Ø ext.	Ref. GB	Ø int.-Ø ext.
/	/	/	/	11220	4x6	/	/
11201	6x8	11211	6x8	11221	6x8	/	/
11202	8x10	/	/	/	/	/	/
11206	6x10	/	/	/	/	/	/
11204	8x12	/	/	/	/	/	/
11205	10x12	/	/	/	/	/	/



Package: 25 pcs

## With rest

Ref. I	Ø int.	Ref. S	Ø int.	Ref. USA	Ø int.	Ref. GB	Ø int.
/	/	/	/	/	/	/	/
/	/	11301	6	11311	6	/	/
/	/	11303	8	11313	8	/	/
/	/	11304	10	11314	10	/	/
/	/	11305	11	11315	11	11322	11
/	/	11306	12	/	/	/	/

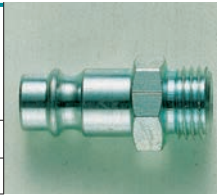


Package: 25 pcs

# STEEL PLUGS ONLY FOR X300 U and X300

## Male

Ref. D	Thread
11041	1/4"
11042	3/8"
11043	1/2"



Package: 25 pcs

## Female

Ref. D	Thread
11141	1/4"
11142	3/8"



Package: 25 pcs

## For rubber hose

Ref. D	Ø int. - Ø ext.
11198	6x14
11197	8x14
11199	8x17



Package: 25 pcs

## For rubber hose with spring

Ref. D	Ø int. - Ø ext.
11241	6x8
11242	8x10
11243	6x10
11244	8x12
11245	10x12



Package: 25 pcs

## With rest

Ref. D	Ø int.
11340	5
11341	6
11342	7
11343	8
11344	10
11345	11
11346	12
11347	13



Package: 25 pcs